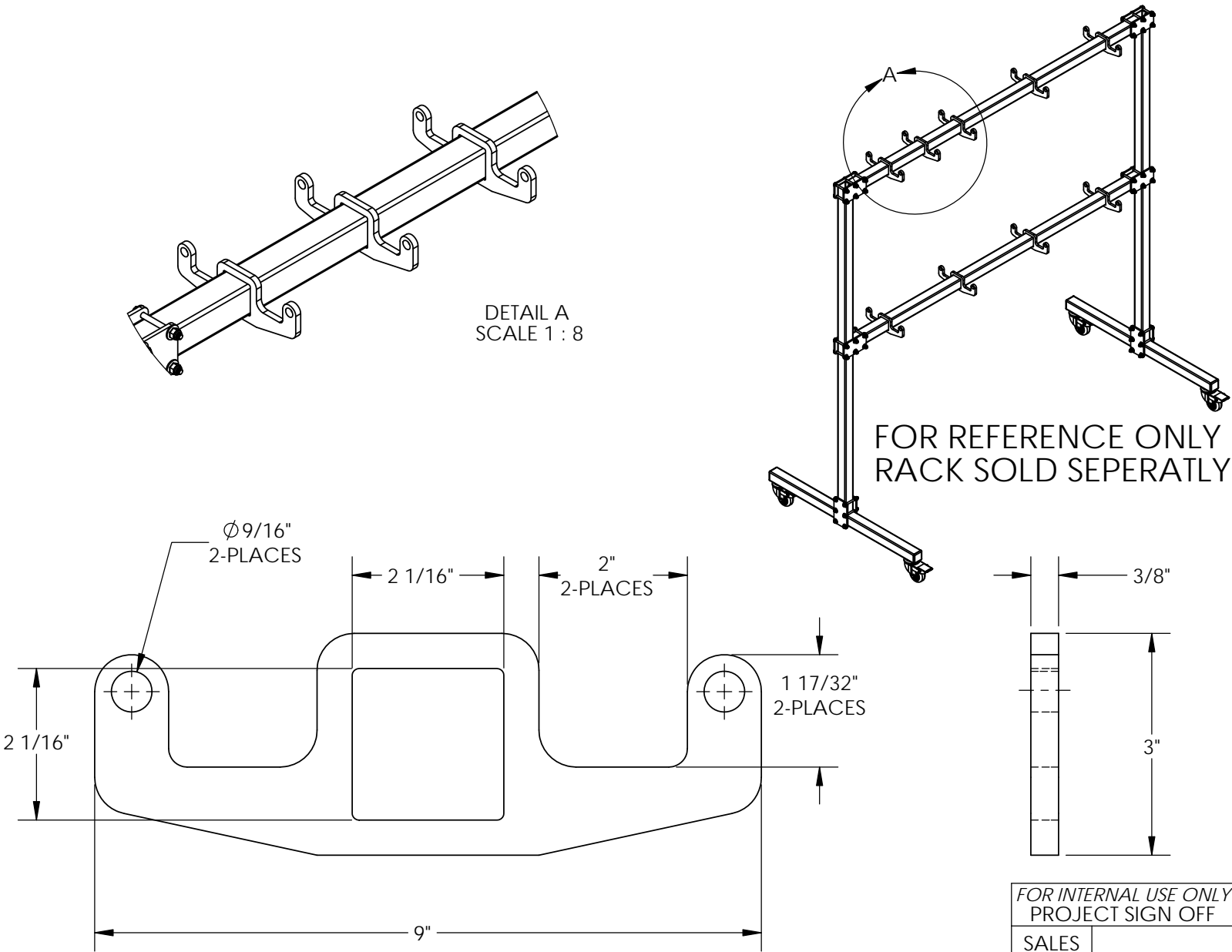


OPTIONAL SLING RACK HOOK - SLR-HK

APPROX WEIGHT: 1.31 lbs.
DOES NOT INCLUDE WEIGHT OF POWER OR PACKAGING!!!

ANY ADDITIONS, DELETIONS, OR OMISSIONS MUST BE CORRECTED ON THIS DRAWING AS THIS DRAWING WILL BE CONSIDERED ALL INCLUSIVE



ALL GRAPHICS PROVIDED ARE FOR REFERENCE ONLY. IF CERTAIN DIMENSIONS ARE CRITICAL PLEASE VERIFY THOSE DIMENSIONS WITH YOUR SALESPERSON

STANDARD FEATURES
MODEL NUMBER IS SLR-HK
OVERALL WIDTH IS 3/8"
OVERALL LENGTH IS 9"
OVERALL HEIGHT IS 3"
MAX CAPACITY PER DOUBLE HOOK IS 150 LBS

FOR USE ON SLR-S-6 AND SLR-M-6

SPECIAL FEATURES
NONE

FOR INTERNAL USE ONLY
PROJECT SIGN OFF

SALES	
ENG.	
FAB.	
POWER	

APPROVAL

I, THE UNDERSIGNED, AGREE THAT THE PRODUCT AS REPRESENTED SATISFIES DESIGN AND DIMENSION REQUIREMENTS. I ALSO ACKNOWLEDGE MY DUTY TO CONFIRM PRODUCT AND INSTALLATION COMPLIANCE WITH ALL APPLICABLE FEDERAL, STATE AND LOCAL REGULATIONS AND STANDARDS.
ALL SPECIAL UNITS ARE NON-RETURNABLE
[] As drawn [] As marked

Signed: _____ Date: _____
LEAD TIME WILL START UPON RECEIPT OF SIGNED APPROVAL DRAWING

DISTRIBUTOR'S NAME:
VESTIL MANUFACTURING

DRAWN BY: T.WEINKAUFF
REFERENCE: X
QUOTED LEAD TIME: X

DATE: 11/17/2015
SCALE: 1:2
QUOTE # X

P.O.# X
W.O.# X
SALES: X
FILE NAME:
31-007-226